

Be on the Lookout!

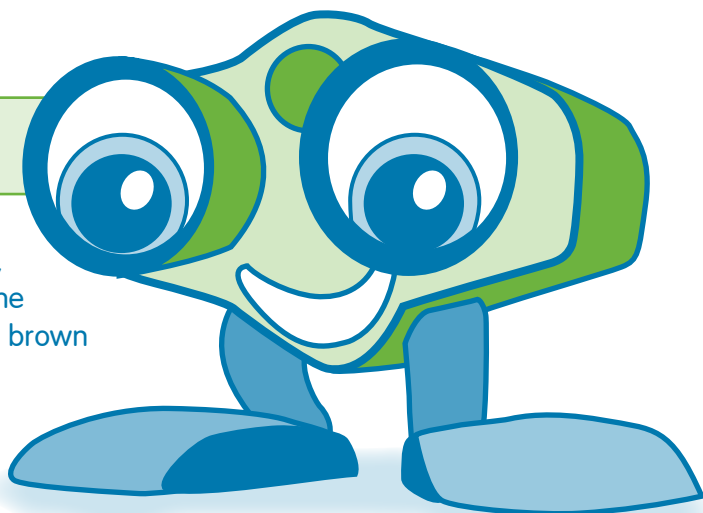
We apply effective weed controls every two months, but there are a few pests that are especially troublesome and require special attention. These include nutsedge, brown patch, and zoysia patch.

Nutsedge is a plant that is distinguished by three-sided stems and star-like flower petals. It is capable of splitting reinforced concrete slabs and forcing its way through asphalt driveways, so it shouldn't be taken lightly. Most common in Bermuda lawns, nutsedge is generally active between April and September.

Brown Patch, also known as Large Patch, is a fungus common to the Atlanta area. The beauty of a lawn can be quickly destroyed by this fungus, which appears as large, unsightly symmetrical patches. The area of the patches can range in diameter from a few inches to a few feet. Over time, if untreated, the center of the patch will recover, resulting in a doughnut-shaped pattern. Like nutsedge, brown patch is active during the warm months, April through September.

Finally, zoysia patch attacks zoysia grass and becomes active as it emerges from winter dormancy (usually during moderate temperatures such as in April and May). Symptoms first appear as blades taking on a tan to orange color in small patches, around 2 inches in diameter. These patches can quickly expand to 20 feet or so in diameter.

Treatment for these three problems requires the application of specific products. If you've noticed any of these creeping up, call us at 770-447-6037 ext 2, and we'll stop by to provide a free estimate for treatment.



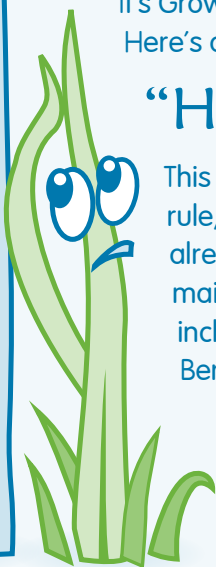
It's Growing Season...and that means **MOWING SEASON!**

Here's one question we typically get during this time of the year.

“How often should I mow?”

This really depends upon the type of grass you have, but as a good general rule, mow often enough that you remove about one-third of what is already there while maintaining optimal height. Bermuda grass should be maintained at about 1.5 inches, so mow when the grass is a little past 2 inches (you would be cutting it about 1/3). Typically, during growth season, Bermuda should be cut about every fourth day.

Fescue should be maintained at around 3 inches, so cut when the grass is about 4 or 4.5 inches. And Centipede, similar to Bermuda, should be maintained at about 1.5 inches, so mow when it's over 2 inches.



How your lawn can survive the Georgia Water Restrictions*

We have moved from “abnormally dry” to “mild drought” to “drought” status over the last year. This is why we find ourselves in a level two drought declaration across Georgia, even with the recent rain. In other words, we must all continue to adhere to a more stringent outdoor water use schedule. The official schedule is as follows:

Odd-numbered addresses may water only on Tuesdays, Thursdays, and Sundays from midnight to 10 a.m.

Even-numbered and unnumbered addresses may water only on Mondays, Wednesdays, and Saturdays from midnight to 10 a.m.

Additional restrictions may be in force in your county as well.

Due to this schedule, we have to be smarter with how we’re irrigating our lawns. Here are some suggestions from the Georgia Department of Natural Resources:

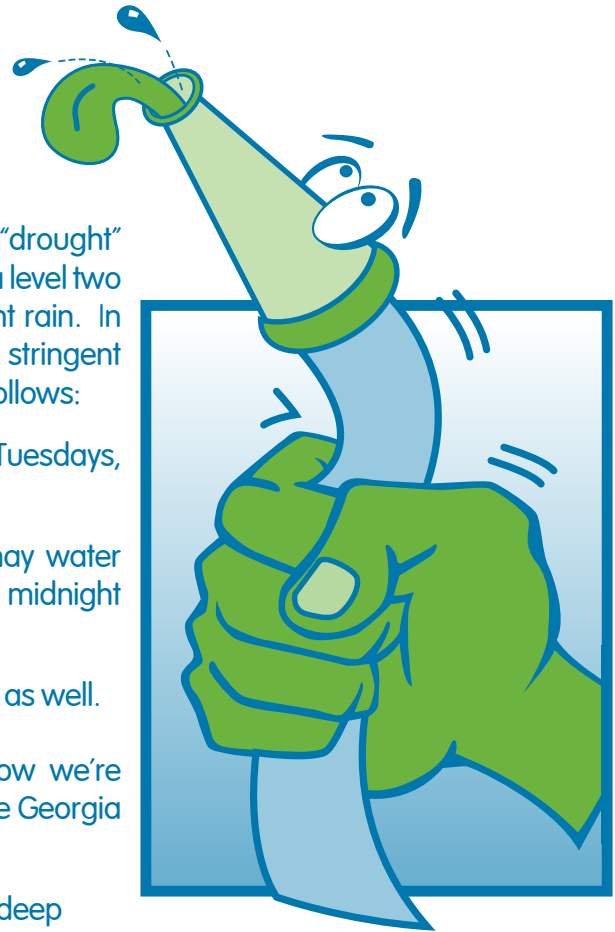
- Water only once a week. When it hasn’t rained, a deep soaking every week will provide your lawn with plenty of moisture.
- Soak, don’t sprinkle. When you water, aim the nozzle at the base of plants so more water will reach the roots.
- Turn off the sprinkler when it rains. Install an inexpensive rain sensor shut-off switch.
- Mulch! Using pine straw, bark chips, or ground hardwood mulch on the roots of plants and trees helps the soil retain water.

*The status of the water restrictions can change anytime.

And we also have to be discriminating—

As we cope with the restrictive water bans, metro Atlantans should focus their outdoor watering efforts on more expensive trees and shrubs to save on replacement costs. Turf and annuals are usually more drought-tolerant and less expensive to replace than pricier greenery, such as dogwoods and azaleas.

An established Bermuda-sod lawn can endure up to eight weeks without supplemental water, whereas trees and shrubs are less likely to survive under similar conditions. Remember, if you lose a tree, not only do you have to pay for the cost of replacing it, you have to pay the cost of tree removal, which can be quite expensive.



Bare in Mind...

<<< continued from page 1

"42.7% of all statistics are made up on the spot."

"A conscience is what hurts when all your other parts feel so good."

"A clear conscience is usually the sign of a bad memory."

"If you want the rainbow, you gotta put up with the rain."

"All those who believe in psychokinesis, raise my hand."

"The early bird may get the worm, but the second mouse gets the cheese."

"I almost had a psychic girlfriend, but she left me before we met."

"OK, so what's the speed of dark?"

"How do you tell when you're out of invisible ink?"

"If everything seems to be going well, you have obviously overlooked something."

"Depression is merely anger without enthusiasm."

"When everything is coming your way, you're in the wrong lane."

"Ambition is a poor excuse for not having enough sense to be lazy."

"Hard work pays off in the future. Laziness pays off now."

"I intend to live forever. So far, so good."

"If Barbie is so popular, why do you have to buy her friends?"

"Eagles may soar, but weasels don't get sucked into jet engines."

"What happens if you get scared to death twice?"

"My mechanic told me, 'I couldn't repair your brakes, so I made your horn louder.'"

"Why do psychics have to ask you your name?"

"If at first you don't succeed, destroy all evidence that you tried."

"A conclusion is the place where you got tired of thinking."

"Experience is something you don't get until just after you need it."

"The hardness of the butter is proportional to the softness of the bread."

"To steal ideas from one person is plagiarism, to steal from many is research."

"The problem with the gene pool is that there is no lifeguard."

"The sooner you fall behind, the more time you'll have to catch up."

"The colder the x-ray table, the more of your body is required to be on it."

"Everyone has a photographic memory; some just don't have film."

"If your car could travel at the speed of light, would your headlights work?"

The person who sent this to me didn't tell me where it came from, but this is supposed to be a true story.

On July 20, 1969, as commander of the Apollo 11 Lunar Module, Neil Armstrong was the first person to set foot on the moon. His first words after stepping on the moon, "That's one small step for man, one giant leap for mankind," were televised to Earth and heard by millions. But just before he re-entered the lander, he made the enigmatic remark: "Good luck Mr. Gorsky."

Many people at NASA thought it was a casual remark concerning some rival soviet Cosmonaut. However, upon checking, there was no Gorsky in either the Russian or American space programs. Over the years, many people questioned Armstrong as to what the "Good luck

Mr. Gorsky" statement meant, but Armstrong always just smiled.

This time he finally responded. Mr. Gorsky had died and so Neil Armstrong felt he could answer the question.

In 1938, when he was a kid in a small Midwest town, he was playing baseball with a friend in the backyard. His friend hit a fly ball, which landed in his neighbor's yard by the bedroom windows. His neighbors were Mr. and Mrs. Gorsky.

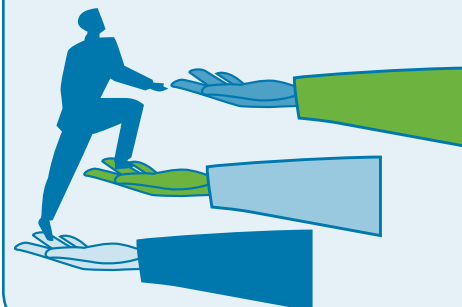
As he leaned down to pick up his ball, young Armstrong heard Mrs. Gorsky shouting at Mr. Gorsky. "Sex! You want sex? You'll get sex when the kid next door walks on the moon!"

Is it really true? I don't know, but I hope you found it amusing.

HELP THY NEIGHBOR!

Are any of your neighbors commenting on how good your lawn looks? If so, let them know about our website, www.arbor-nomics.com. They can request an estimate right on line. Of course, they can also call us at **770-447-6037 ext. 2**.

If they mention your name as the referral, and sign on with our service, we'll take \$10 off your next bill.



The BUGGETTE

Volume 27 – Number 159

Application #3/2007

an ARBOR-NOMICS Newsletter



We are an Equal-
Opportunity
Residential and
Commercial Lawn
Care Provider!

We love taking care of lawns and trees...whether they're outside your home or your office window. That's right, we provide commercial service in addition to residential service.

We offer a variety of commercial service options and will work closely with your landscapers to create a program that meets your property needs. Imagine that...healthy, beautiful lawns wherever you are!

**Call Doug Cash at 770-447-6037 ext 1113
for more information.**



A recent economic study involving single-family homes concluded that improving the quality of the landscaping from "average" to "excellent" raises the home's value by an average of 10%. What's the value of your home?

-Source: www.gardendigest.com



Bare In Mind

by Dick Bare

Some of our customers tell me that they love to read my column, which is fantastic. And they, in turn, send me funny stories to enjoy. So this month, I thought I'd take it easy and let you enjoy some of their stories as well...

Words from Steven Wright

If you're not familiar with Steven Wright, he's the famous erudite scientist who once said:

"I woke up one morning and all of my stuff had been stolen and replaced by exact duplicates."

His mind tends to see things a bit differently than the rest of us mortals.

Here are some of his gems:

"I'd kill for a Nobel Peace Prize."

"Borrow money from pessimists – they don't expect it back."

"Half the people you know are below average."

"99% of lawyers give the rest a bad name."